



*Actual Outdoor Sauna Room may Vary from Image Displayed.

OUTDOOR SAUNA SERIES | SL2

Installation and Operating Instructions

Finnleo® Customizable Euro Outdoor Room

finnleo

THIS PAGE IS INTENTIONALLY BLANK



Congratulations on your decisions to enjoy the finest sauna available...

Welcome to the growing family of Finnleo® sauna owners.

Before you begin reviewing the manual, please take a moment to register your warranty. Doing so will assist us in contacting you for any important notification.

Prior to registering, you will need the serial number(s) located on the equipment.

To register, please go to <https://www.Finnleo.com/warranty-registration>



FOR YOUR RECORDS

Sauna Room Model/Serial Number: _____

Contactor Box Model/Serial Number: _____

Date Purchased: _____

Dealer: _____

Address: _____

Phone Number: _____

Website/Email: _____

If questions arise regarding this product or this manual, please contact your authorized *Finnleo* dealership. They are trained professionals who are familiar with the product as well as new sauna ownership concerns. Their expertise will facilitate the enjoyment of your new ***Finnleo*** sauna.

IMPORTANT: Finnleo/SAUNA360 reserves the right to change specifications or design without notification and without incurring any obligation.

THIS PAGE IS INTENTIONALLY BLANK

Table of Contents

SECTION 1. BEFORE YOU BEGIN	1
SECTION 2. SAFETY INFORMATION	2
2.1. CONSTRUCTION and INSTALLATION SAFETY	2
2.2. USER and OPERATIONAL SAFETY	3
SECTION 3. INSTALLATION REQUIREMENTS	4
SECTION 4. PART LIST and RECOMMENDED TOOLS	5
4.1. Euro Parts List	5
4.2. ACCESSORIES	6
4.3. RECOMMENDED TOOLS	6
SECTION 5. SAUNA ROOM ASSEMBLY	7
SECTION 6. INSTALLING METAL FASCIA and ROOFING	26
SECTION 7. INSTALLING SAFETY PLACARDS	33
SECTION 8. MANAGING TWISTED CORNER TRIM	34
SECTION 9. HOW TO TAKE A SAUNA	35

SECTION 1. BEFORE YOU BEGIN

Use these instructions when assembling the Finnleo® Euro Outdoor Room. For best results and for protection of product warranty, please read, understand and follow all safety information, safety placards, and installation and operating instructions prior to starting the installation process. When completed, leave these instructions with the owner.

If questions arise regarding this product or this manual, please contact your authorized *Finnleo* dealership. They are trained professionals who are familiar with the product as well as new sauna ownership concerns. Their expertise will facilitate the enjoyment of your new ***Finnleo*** sauna.

SECTION 2. SAFETY INFORMATION**2.1. CONSTRUCTION and INSTALLATION SAFETY**

WARNING - ELECTRIC SHOCK HAZARD: High voltage exists within this equipment. There are no user-serviceable parts within this equipment. Have the equipment installed and serviced only by qualified and licensed personnel in accordance with local and national codes.



WARNING - ELECTRIC SHOCK HAZARD: DO NOT install electrical receptacles inside the sauna room.



WARNING: If installing a fire sprinkler system inside the sauna room, ensure it is properly rated for sauna room temperatures.



WARNING: Drilling, sawing, sanding or machining cedar wood products can expose you to wood dust, a substance known to the State of California to cause cancer. Avoid inhaling wood dust or use a dust mask or other safeguards for personal protection. For more information go to www.P65Warnings.ca.gov/wood.



CAUTION: During assembly, observe all recommended minimum safe distances between the heater and combustible materials. Recheck all measurements to verify minimum safe distances are maintained.



CAUTION: When assembly is completed, ensure proper ventilation is provided and airflow is not restricted.



CAUTION: Loose electrical connections can cause heat damage to wires, terminal blocks and other components. Improper connections may void product warranty. Ensure all electrical connections are installed and inspected by qualified and licensed personnel.



IMPORTANT: The door to the sauna room must open outward, to the exterior of the sauna room.



IMPORTANT: DO NOT install a lock or mechanical locking device onto the door of the sauna room. If needed, use only a magnetic or spring-loaded catch mechanism that allows the door to open when pressed or pulled.



IMPORTANT: To prevent electrical shock, provide adequate electrical grounding to the electrical receptacle.



IMPORTANT: Do not install a shower in the sauna room.

NOTE: Use only approved sauna room materials for interior construction of the sauna room. Installation of unapproved materials or accessories may void product warranty

NOTE: To protect product warranty, only qualified licensed personnel should perform installation and service to this equipment.

NOTE: A GFCI (Ground-Fault Circuit Interrupter) device is not required by NEC. Only install a GFCI if required by local codes, however, be aware this will cause nuisance electrical circuit trips during use of the product.

2.2. USER and OPERATIONAL SAFETY

WARNING: Prolonged exposure to elevated temperatures can induce hyperthermia. Hyperthermia occurs when internal body temperature reaches several degrees above normal (98.6°F). Symptoms of hyperthermia include an increase in body temperature, dizziness, lethargy, drowsiness, and fainting. Effects of hyperthermia include failure to perceive heat, failure to recognize the need to exit the room, unawareness of impending hazard, fetal damage in pregnant women, physical inability to exit the room and unconsciousness.



WARNING: DO NOT take a sauna if using alcohol, recreational drugs, or prescribed medication as these may greatly increase risk of hyperthermia, personal injury or death.



WARNING - FIRE HAZARD: DO NOT use the sauna room for drying clothes, bathing suits, towels, etc. **DO NOT** hang towels above heater or place objects onto the sauna heater. Only place rocks supplied with the heater onto the heating elements. **DO NOT** place combustible materials onto the sauna heater.



WARNING - FIRE HAZARD: IMMEDIATELY DISCONTINUE using the sauna if the walls or ceiling exhibit unusual discoloration and/or darken in color.



WARNING - HOT SURFACES: The heater is extremely hot during operation. Keep hair, head, hands, body, and appendages on the safe side of guard rails. Keep children and vulnerable individuals a safe distance away from the heater. **DO NOT TOUCH** the heater while in operation as severe burns to skin may result.



WARNING - CORROSIVE: DO NOT pour chlorinated pool or spa water onto the heater as corrosion will occur and void product warranty.



WARNING: DO NOT pour excessive water onto the heater as damage may occur and void product warranty.



IMPORTANT: If pregnant or a person in poor health, consult with a physician before using sauna.



IMPORTANT: DO NOT exercise, play or roughhouse while using the sauna. Be safe and respectful of everyone.



IMPORTANT: Keep children, minors, and vulnerable individuals a safe distance away from a warming or hot sauna heater. Be a responsible sauna user. When needed, provide operating instructions to those less experienced. Keep operation of the sauna safe for yourself and others to enjoy.

NOTE: Inspect the sauna regularly. Check for maintenance of the heater, control, and benches. Replace wood surfaces should any show signs of deterioration.

SECTION 3. INSTALLATION REQUIREMENTS

To ensure safe installation and use of the sauna room, verify the following criteria are met:

- Install this sauna room on a solid, flat, level surface that will support the combined weight of the sauna room and maximum occupant capacity. The manufacturer recommends a flat, level concrete pad of appropriate thickness (consult with local building codes), or equivalent platform, that will support the entire floor area of the sauna room.
- Maintain a clearance of 24 inches (minimum) from structures and greenery (i.e. trees, shrubs). Consult local building codes for further clearances that may apply.

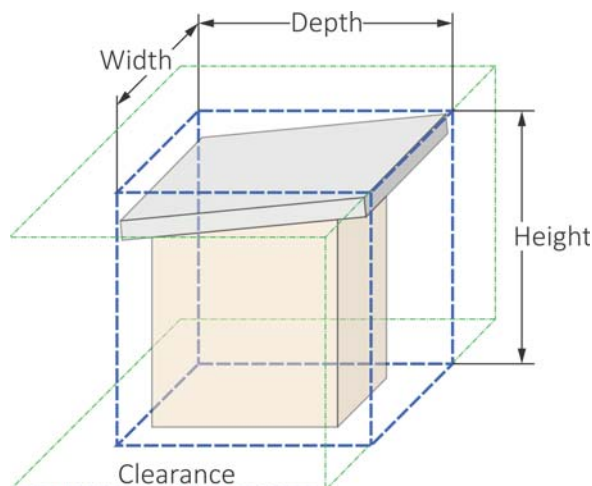


Figure 1. Sauna Room Area

- As an outdoor room, it is recommended to securely anchor this sauna room. Consult local building codes for approved anchoring methods and materials.
- At least three (3) adults are required for the assembly and installation of the sauna room.
- Ensure all electrical wiring is installed in accordance with NEC, state, and local codes. Installation of high-voltage wiring must be completed by a licensed Electrician.
- Review the specifications provided in the associated heater manual for recommended wire ratings and current load.
- Install electrical wire that is rated appropriately to meet or exceed the *Maximum Current Load* from the electrical panel to the contactor (CB) box of the sauna room.
- A dedicated electrical circuit is recommended to avoid unnecessary tripping of the assigned circuit breaker.
- Ensure the circuit breaker is rated to *ONLY* meet the design limit of the *Maximum Current Load*. Do not install an oversized/over-rated circuit breaker. Do not exceed the safety rating of the *Maximum Current Load*.
- Provide adequate grounding from the electrical supply panel to the CB box.



IMPORTANT: The **EXTERIOR WOOD** surfaces of this sauna room require adequate coatings of primer and a desired paint color or stain and clear UV resistant finish to protect the exposed wood from weather and elements of the environment. **DO NOT** apply paint, stain, or other finish coatings onto the interior wood surfaces.

- When installation is complete, ensure the inlet and exhaust vents are open and free from blockage and obstructions.

SECTION 4. PART LIST and RECOMMENDED TOOLS

Before starting the assembly process, inspect packaging and verify contents. Inspect all boxes and exposed materials for shipping damage. If damage is identified notify the delivery carrier immediately.

The hardware package with each room includes a T20 Torx bit.

4.1. Euro Parts List

Itm No.	Description	QTY
1	Fascia Trim	
2	Ceiling Panel	
3	Top Plate	
4	Interior Cove	
5	Bench	
6	Exterior Corner Trim	
7	Wall Panel	
8	Base Floor	
9	Duck Board Floor	
10		
11		
12		
13		
14		
15		
16		
	Hardware Package	1



Trim Profiles

Cove Molding



Window/Door Casing
(Normally Pre-Installed)



Inside Corner Molding



Exterior Fascia Trim



Eave Trim/Exterior
Corner Molding



4.2. ACCESSORIES

Styles and wood species may vary based on selected interior design options.

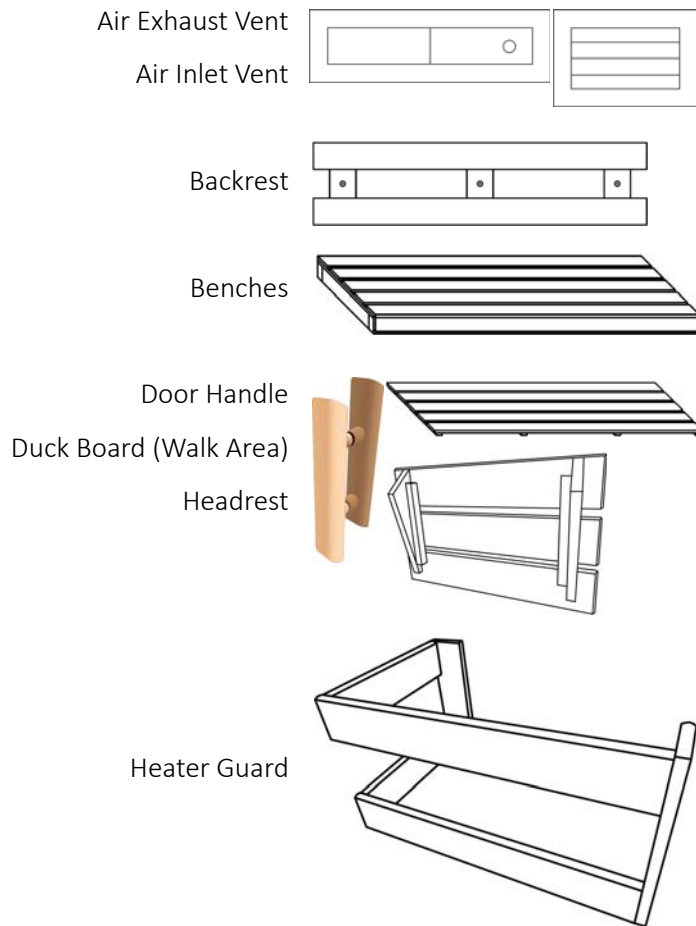


Figure 2. Accessories

4.3. RECOMMENDED TOOLS

- Box knife
- #2 Phillips Head Screw Driver
- T10, T20, and T15 Torx Drive bit
- 1/4" Hex Head Magnetic Socket drive bit
- Bubble level
- Two (2) glass lifting suction cups (suggested when sauna includes a glass front)
- Roll of blue painter's tape
- 2.8 oz. Squeeze Tube of Silicone Door and Window Sealant
- Pneumatic Brad Nailer (16/18 Gage)
- Package of 16 gage x 2" nails
- Package of 18 gage X 1 1/2" nails
- Miter saw/Circular saw
- Jigsaw
- Non-marring Rubber Mallet
- Shims
- Step Ladder
- Tape Measure, Straight Edge/Square
- Cordless Drill
- 1/8" metal-cutting drill bit
- Tin Snips
- 5" Hand Seamer
- Pencil, String/Chalk Line
- Stapler and Roofing Staples

SECTION 5. SAUNA ROOM ASSEMBLY

Use these instructions for assembling a Euro **OUTDOOR** sauna room. All wall panels are numbered from the top and visible from the interior of the room. These numbers coincide with the numbers printed around the base frame.

For ease of illustration, most steps in this manual are written for the 4x5, 5x7, and 7x10 two-piece side wall system.

ASSEMBLING THE BASE RAIL

The standard base rail is used for rooms larger than 5x7. For rooms 5x7 and smaller, the integral base is used instead. For rooms with the integral base, skip ahead to **Installing the Integral Base** sub-section.

1. Assemble on a flat, level surface, **at least** 24 inches away from adjacent walls. Consult local building codes as actual distance and safety requirements may vary.
 2. Orient the stamped numbers on the base rail/integral floor to be readable from inside the room with the numeric sequence running counterclockwise.
 3. Orient the stamped number **1** as the *Right-Front* wall.
 4. Fasten each corner of the base rail using the 3" screws in the pre-drilled holes provided.
-
5. Measure diagonally corner-to-corner across the base rails to ensure the frame is square.
 6. Compare the diagonal values measured, they should be equal. A square base rail is critical to ensure proper fitment of walls (and glass panels if included) and door.
 7. Verify the base rail is laying level on all four sides. Use wood shims where appropriate to make level.
 8. Anchor the rail to the pad/platform on which it rests. Consult local building codes for approved anchoring methods and materials.



Figure 3. Laying the Base Rail

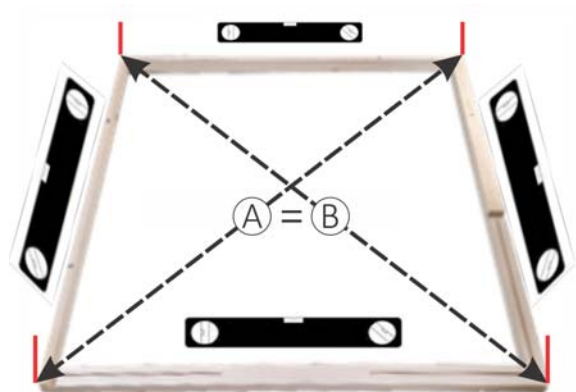
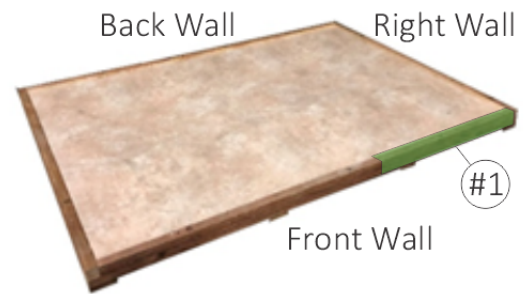


Figure 4. Squaring and Leveling the Base Rail

INSTALLING THE INTEGRAL BASE (Optional)

1. Place on a flat, level surface, **at least** 24 inches away from adjacent walls. Consult local building codes as actual distance and safety requirements may vary.
2. Orient the stamped numbers on the integral base to be readable from inside the room with the numeric sequence running counterclockwise.
3. Orient the stamped number **1** as the *Right-Front* wall.
4. Verify the integral base is laying level on all four sides. Use wood shims where appropriate to make level.
5. Anchor the base to the pad/platform on which it rests. Consult local building codes for approved anchoring methods and materials.

**Figure 5. Wall #1 Orientation**

INSTALLING WALLS #1 and #2

NOTE: Throughout installation of walls, it is an option to apply silicone caulk between base rails and walls to prevent infiltration of rain, snow, and condensation into the sauna.

6. Remove protective foam from bottom edge of each wall section before installation.
7. Place wall #1 onto the base rail labeled #1.
8. Align framework of the panel with the base rail.
9. Hold wall #1 upright while wall #2 is placed.
10. Place wall #2 onto the base rail labeled #2.
11. Align the corners of wall #1 and wall #2 to ensure the panels are flush for the entire length (from base to top).
12. Attach the edge of the wall #1 corner stud to the wall #2 corner stud with three (3) 3" Torx head screws.

NOTE: Rooms that are 4x6, 5x6, and 6x12 have a **1-piece** side wall system.
Rooms that are 4x5, 5x7, and 7x10 include a **2-piece** side wall system.

INSTALLING WALL #3 (2-Piece Side Wall System)

This section is for 2-piece side wall systems. If the sauna has a 1-piece side wall, skip ahead to the next section.

13. Angle/rotate wall #3 so that the lower-left corner touches the base rail first.
14. Guide the tongue and groove edges of wall #3 and wall #2 together while fitting the wall to the base rail.
15. If necessary, use a rubber mallet to tap wall #3 down so the top edge is flush with wall #2.
16. Toe-nail screw the top of wall #3 into wall #2 with a 3" Torx screw.



Figure 6. Installing Walls #1 and #2



Figure 7. Attaching Wall #1 to Wall #2



Figure 8. Installing Wall #3



Figure 9. Toe-Nailing Example

INSTALLING WALL #4

NOTE: Wall number may vary with a 1-piece wall system.

17. Place wall #4 onto the base rail section labeled #4.
18. Align and fit the corner of wall #4 with the corner of wall #3.
19. Attach the edge of wall #3 corner stud to the edge of wall #4 corner stud using three (3) 3" Torx head screws.



Figure 10. Installing Wall #4

INSTALLING WALL #5

NOTE: Wall number may vary with a 1-piece wall system.

20. Angle/rotate wall #5 so that the lower-left corner touches the base rail first.
21. Guide the tongue and groove edges of wall #5 and wall #4 together while fitting the wall to the base rail.
22. If necessary, use a rubber mallet to tap wall #5 down so the top edge is flush with wall #4.
23. Toe-nail screw the top of wall #5 into wall #4 with one 3" Torx head screw.



Figure 11. Installing Wall #5

INSTALLING WALL #6

NOTE: Wall number may vary with a 1-piece wall system.

24. Angle/rotate wall #6 so that the lower-left corner touches the base rail first.
25. Guide the tongue and groove edges of wall #6 and wall #5(4) together while fitting the wall to the base rail.
26. If necessary, use a rubber mallet to tap wall #6 down so the top edge is flush with wall #5.
27. Toe-nail screw the top of wall #6 into wall #5 with a 3" Torx head screw.



Figure 12. Installing Wall #6

INSTALLING WALL #7

NOTE: Wall number may vary with a 1-piece wall system.

28. Place wall #7(6) onto the base rail labeled #7.
29. Align and fit the corner of wall #7 with the corner of wall #6.
30. Attach the edge of wall #6 corner stud to the edge of wall #7 corner stud using three (3) 3" Torx head screws.



Figure 13. Installing Wall #7

INSTALLING WALL #8 (2-Piece Side Wall System)

This section is for 2-piece side wall systems. If the sauna has a 1-piece side wall, skip ahead to the next section.

31. Angle/rotate wall #8 so that the lower-left corner touches the base rail first.
32. Guide the tongue and groove edges of wall #8 and wall #7 together while fitting the wall to the base rail.
33. If necessary, use a rubber mallet to tap wall #8 down so the top edge is flush with wall #7.
34. Toe-nail screw the top of wall #8 into wall #7 with a 3" Torx head screw.



Figure 14. Installing Wall #8

INSTALLING DOOR PANEL ASSEMBLY

NOTE: These instructions are written for the general purpose of guiding the installer through the installation process. The door panel assembly is custom-ordered. Alter these steps as necessary for installation of the door panel assembly.

35. Place the door panel assembly onto the front base rail in the location designated.
36. Fit together the edge tongue and grooves of this assembly with wall #1.
37. Toe-nail screw the top of the door panel assembly to wall #1 with a 3" Torx head screw.
38. If door panel assembly extends to the left corner of room:
 - a. Square up and attach the corner stud of the door panel assembly to the corner stud of the left side wall using three (3) 3" Torx head screws.
39. If installation requires additional wall section:
 - a. Angle/rotate the wall section so that the lower-right corner touches the base rail first.
 - b. Guide the tongue and groove edges of the wall section and door panel assembly together while fitting the wall to the base rail.
 - c. If necessary, use a rubber mallet to tap the wall section down so the top edge is flush with the left side wall.
 - d. Toenail screw the top of the wall section into the door panel assembly with a 3" Torx head screw.
 - e. Square up and attach the corner stud of the wall section to the corner stud of the left side wall using three (3) 3" Torx head screws.

ATTACHING WALLS TO BASE RAIL

40. Gather enough 3" Torx head screws needed to attach the remaining walls to the base rail.
41. Through the pockets provided, use one (1) screw each and attach the walls to the base rail.
42. Install covers over the pocket openings and nail the covers in place.
43. Install vent cover.

NOTE: Electrical access or other labeled access boards are intentionally left uninstalled. Do not install panels until electrical components have been installed and assessed by a licensed electrician.



Figure 15. Installing Door Panel Assembly



Figure 16. Installing Additional Wall Section

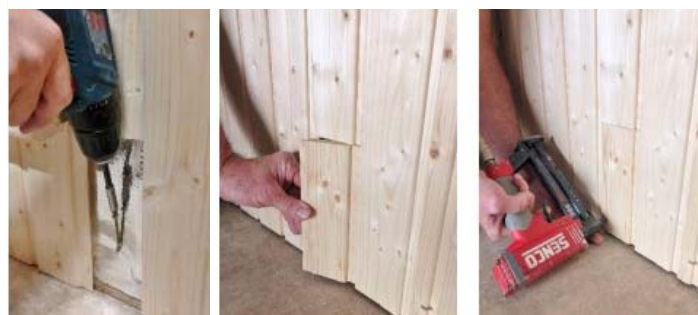


Figure 17. Pockets for Attaching Walls to Base Rail

INSTALLING DOOR HANDLE

44. Install door handle with the pre-drilled holes inside the room.
45. Attach the handles together using the two (2) screws provided with the handle package.
46. Install the wooden buttons over the screw holes.



Figure 18. Installing Door Handle

INSTALLING the TOP PLATE

47. Gather the numbered back top plate by matching the numbers with the corresponding wall panels.
48. Install the back top plate with the notched ends face up.



Figure 19. Installing Back Top Plate

49. Install the left and right top plates with the notches facing down, interlocking with the notches on the back top plate.
50. Ensure the top plates are fully resting on the framework of the wall panels.
51. Ensure the top of the top plate is flush with the top of the interior tongue and groove planks.



Figure 20. Installing Left Top Plate

52. Attach the four corners of the top plates to the corners of the walls using one(1) 2" Torx head screw in each corner.



Figure 21. Attaching the Top Plate Corners

INSTALLING EXTERIOR CORNER TRIM

53. Match the numbered exterior corner trim with the numbers on the exposed wall corners.
54. Align and fit the tongue of the edge on the corner trim with the groove on the edge of the exterior wall.
55. Press and hold the corner trim in place.
56. Use appropriate sized brad/finishing nails to attach the corner trim.

NOTE: Twisting occurs naturally for some species of open-cell wood. Variations in grain density, changes in humidity, moisture on/in the wood, and changes in the weather all contribute to the effect. Twisting is particularly troublesome when installing wood trim. Suggestions are provided in "SECTION 8. MANAGING TWISTED CORNER TRIM" on page 34.

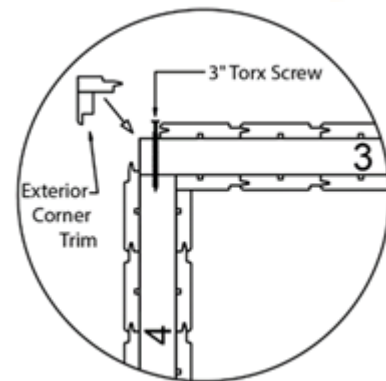


Figure 22. Installing Exterior Corner Trim

INSTALLING LOWER BENCH SUPPORTS

Follow these steps if the Lower bench supports are not pre-installed. The lower bench supports must be attached to the walls prior to installing the CB box.

57. On the right wall, locate the pencil marks identified on the red colored "Lower Bench Support" label.
58. Place the lower right bench support between the pencil marks.

NOTE: The walls are marked and labeled at the heights the for attaching the bench supports. Standard top bench support is 30" and the lower bench support is 12". These heights are measured from the floor to the top edge of the supports, not the top of the benches.

59. Attach the lower right bench support through the pre-drilled holes on the wall using four (4) 3" Torx head screws.
60. Repeat Step 57 through Step 59 on the left wall for the lower left bench support.



Figure 23. Installing Lower Bench Supports

INSTALLING CONTACTOR (CB) BOX

Use the following steps when the sauna room includes an electrical heater with external control. If the sauna includes a wood burning heater, skip the electrical sections.

61. Remove the cover from the CB Box to gain access to the four (4) mounting holes located in the back of the box.
62. Set the hardware and cover aside in a safe location.
63. Using two (2) pieces of scrap 2x4 lumber as spacers, position the CB box into the corner of the back wall away from the intended heater location.

NOTE: If the mounting holes of the CB box align with a groove in the wall, move the box left or right to align the holes with a solid portion of the plank.

64. Using the four (4) 3/16" x 3/4" screws supplied with the kit, attach the CB Box to the wall.



Figure 24. Aligning the CB Box



Figure 25. Attaching the CB Box

INSTALLING OPTIONAL CABLE TRACK

Use the following steps when the Euro room includes optional cable track. Skip ahead to the next section when the sauna room does not include cable track.

65. Orient the cable track with the slot facing up.
66. Peel off the protective paper from the adhesive strip located on the backside of the cable track.
67. Apply the sticky side of the cable track along the bottom edge of the wall towards the intended heater location.
68. Route the heater power cable into the track.
69. Route the temperature sensor cable and control cable into the cable track on top of the power cable.
70. Starting from one end of the cable track, snap the edge of the cover into the receiving slot, sealing the cable track closed as you progress towards the other end of the track.



Figure 26. Orienting and Installing Cable Track



Figure 27. Routing Cables

CONNECTING CABLES

Refer to the associated electrical heater manual for cabling details. If this sauna includes a wood burning sauna, skip this electrical section.

Electrical installation must be made by a licensed Electrician in accordance with the National Electric Code and local regulations.

71. Prepare the heater and cables for installation. See the appropriate heater ***Installation and Operating Instructions*** manual for details.
72. Route the heater and power supply cables through the bottom opening located on the *High Voltage* side of the CB Box.
73. Route low voltage cables through bottom openings located on the *Low Voltage* side of the CB box.
74. All final connections must be made by a licensed electrician. See the appropriate heater ***Installation and Operating Instructions*** manual for details.

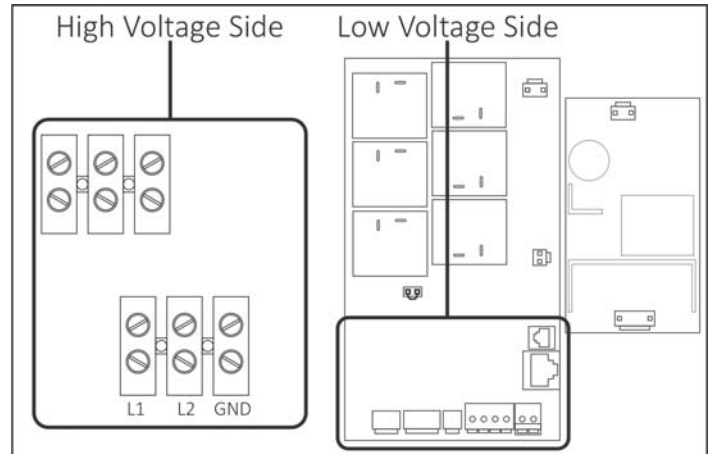


Figure 28. Typical CB Box Internal View

INSTALLING the ROOF

75. Apply 1/2" wide weather stripping across the top edge of all four walls.



HEAVY OBJECT: A minimum of two people are required to lift the roof sections into place.

NOTE: The number of roofing panels will vary depending on the room size.

76. Place the **Right** roof panel on top of the room, aligning the guide strip over the edge of the front wall.
77. Place the **Left** (and **Center** if applicable) roof panel(s) on top of the room, aligning the guide strip(s) over the edge of the front wall.
78. Press the tongue and groove planks of the ceiling panels together for a snug fit. If necessary, use a rubber mallet or large clamp to mate the panels together.

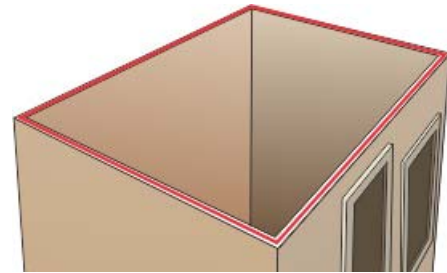


Figure 29. Applying Weather Stripping



Figure 30. Placing the Right Roof Panel

79. Toe-nail screw the edge of the roof panels together using four (4) or more 3" Torx head screws.
80. After the roof panels are attached together, center the roof assembly over the room, measuring to make the soffit reveal equal on both the left and right sides.
81. Measure where the four corners of the room align with the roof.
82. Attach the roof down to the four corners of the room using four (4) 5-1/2" Torx head screws.
83. Press a long straight edge across near the top of adjoining walls, pressing the walls straight.
84. On either side of the butt joint between walls, use a 5-1/2" Torx head screw to attach the roof down onto the walls (4 screws total).
85. Repeat the above steps for the front, left, right, and back walls.
86. After the roof panels are attached to the walls, remove the guide strips.



Figure 31. Toe Nailing Roof Panels Together



Figure 32. Attaching the Roof

INSTALLING WOOD FASCIA

CAUTION: Ensure that you have assistance to hold the fascia boards in place while nailing.

87. Using 2" 16 gage or equivalent finish nails or wood screws, Attach the fascia to the **Back** edge of the roof.
88. Using 2" 16 gage or equivalent finish nails or wood screws, Attach the fascia to the **Right** edge of the roof.
89. Using 2" 16 gage or equivalent finish nails or wood screws, Attach the fascia to the **Left** edge of the roof.

90. Using 2" 16 gage or equivalent finish nails or wood screws, Attach the fascia to the **Front** edge of the roof.

NOTE: Metal fascia and roofing is installed as a later part of this procedure. See "SECTION 6. INSTALLING METAL FASCIA and ROOFING" on page 26.



Figure 33. Installing Back Wood Fascia



Figure 34. Installing Front Wood Fascia

INSTALLING SOFFIT TRIM

NOTE: Measure, mark, and cut soffit trim to length prior to installation.

91. Cut the **Back** soffit trim so the ends are flush with the back of the left and right fascia boards.
92. Using 1 ½" 18 gage finish nails or equivalent, attach the **Back** soffit trim beneath where the soffit meets the back fascia.
93. Cut the **Front** soffit trim so the ends are flush with the back of the left and right fascia boards.
94. Using 1 ½" 18 gage finish nails or equivalent, attach the **Front** soffit trim beneath where the soffit meets the front fascia.
95. Cut the **Left** and **Right** soffit trim so the ends are flush with the edges of the **Front** and **Back** soffit trim.
96. Using 1 ½" 18 gage finish nails or equivalent, attach the **Right** soffit trim beneath where the soffit meets the right fascia.
97. Using 1 ½" 18 gage finish nails or equivalent, attach the **Left** soffit trim beneath where the soffit meets the left fascia.



Figure 35. Measure, Mark, and Cut Soffit Trim



Figure 36. Installing Soffit Trim

INSTALLING EXTERIOR COVE TRIM

NOTE: Measure, mark, and cut exterior cove trim to length prior to installation.

98. Cut the **Left** and **Right** cove trim so the ends are flush with the edges of the **Front** and **Back** walls.
99. Using 1 ½" 18 gage finish nails or equivalent, attach the **Right** exterior cove trim beneath where walls meet the soffit.
100. Using 1 ½" 18 gage finish nails or equivalent, attach the **Left** exterior cove trim beneath where the walls meet the soffit.
101. Cut the **Front** and **Back** cove trim so the ends are flush with the ends of the **Left** and **Right** cove trim.
102. Using 1 ½" 18 gage finish nails or equivalent, attach the **Back** exterior cove trim beneath where the walls meet the soffit.
103. Using 1 ½" 18 gage finish nails or equivalent, attach the **Front** exterior cove trim beneath where the walls meet the soffit.



Figure 37. Installing Exterior Cove Trim

INSTALLING INTERIOR COVE TRIM

NOTE: Measure, mark, and cut interior cove trim to length prior to installation.

104. Cut the **Back** cove trim so the ends are flush to the left and right walls.
105. Using 1 ½" 18 gage finish nails or equivalent, attach the **Back** cove trim beneath where the wall meets the ceiling.
106. Cut the **Left** and **Right** cove trim so the ends are flush to the front wall and **Back** cove trim.
107. Using 1 ½" 18 gage finish nails or equivalent, attach the **Left** cove trim beneath where the wall meets the ceiling.
108. Using 1 ½" 18 gage finish nails or equivalent, attach the **Right** cove trim beneath where the wall meets the ceiling.
109. Cut the **Front** cove trim so the ends are flush to the **Left** and **Right** cove trim.
110. Using 1 ½" 18 gage finish nails or equivalent, attach the **Front** cove trim beneath where the wall meets the ceiling.



Figure 38. Installing Interior Cove Trim

INSTALLING UPPER BENCH

111. Orient the upper bench so the capped front will face forward into the room.
112. Carefully bring the upper bench into the sauna room.
113. Place the ends of the upper bench onto the upper bench supports.
114. Slide the upper bench to the back wall and tilt it up against the wall. Leave tilted until the lower bench is brought into the room.

NOTE: The sauna may include an optional return bench that will attach to either the left or right side of the upper bench.

115. If a return bench is not included, attach the upper bench to the framework of the back wall using two (2) 3" Torx head screws.

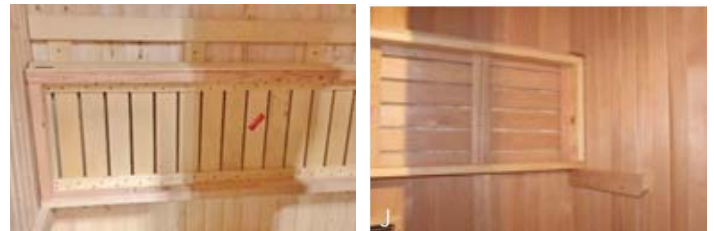


Figure 39. Installing Upper Bench (Tilted Up)

INSTALLING LOWER BENCH

116. Orient the lower bench so the capped front will face forward into the room.
117. Carefully bring the lower bench into the sauna room.
118. Place each end of the lower bench onto the lower bench supports.
119. Slide the lower bench towards the back wall.

NOTE: If sauna includes an electric heater, the top of the CB box may stop the lower bench from reaching the back wall.



Figure 40. Installing Lower Bench

INSTALLING RETURN BENCH

NOTE: These steps apply sauna rooms that include a return bench. The front edge of the return bench may rest on either a bench support attached to the front wall, or optionally on an armrest, or “H” leg support.

120. If included as an option, bring the armrest /H leg support into the sauna room and rest it upright against the front wall where the return bench will route.

121. Bring the return bench into the room.

122. Rest the front edge of the return bench on the bench support attached to the front wall. Alternatively, rest the front edge onto the attachment point of the optional armrest/H leg support.

- The back edge of the return bench also rests on a bench support mounted on the side wall.

123. Depending on bench design, align the seams between bench planks of the upper bench and return bench.

124. Align the elevation of the return bench mating edge so it is flush with the edge of the upper bench.

125. From beneath the return bench, Temporarily use two (2) 2” Torx head screws to hold the rear edge of the return bench to the front right edge of the upper bench.

126. Drill two (2) 3/8” holes through the rear edge of the return bench and front right edge of the upper bench.

127. Insert two (2) 5” x 3/8” carriage bolts through the holes and attach the upper bench and return bench together using 3/8” hex nuts and washers.

128. From beneath the return bench, attach the armrest/H leg support with four (4) 3” Torx head screws.

129. Adjust the feet located beneath the armrest/H leg support for level using a bubble level and a 17mm wrench.

130. Equalize spacing between walls and upper bench on left, back, and right edges.

131. Press the back edge of the armrest/H leg support to the wall and attach to wall using two (2) 3” Torx head screws.

132. Attach the back edge of the return bench to the wall using two (2) 3” Torx head screws.

133. Attach the left, right, and back edges of the upper bench to the walls using four (4) screws.



Figure 41. Installing Return Bench



Figure 42. Attaching Return Bench to Upper Bench

PLACING DUCK BOARD

134. Place the duck board (floorboard) on the floor in front of the lower bench.



Figure 43. Placing Duck Board

INSTALLING the BACKREST(s)

NOTE: The long backrest will go above the upper bench on the back wall. If a return bench is included as an option, a shorter backrest is included to mount above the return bench.

135. Remove the mounting hardware package from the backrest.

If this sauna includes an electric heater, the backrests may also include low-voltage lighting strips and the walls are pre-wired with lighting cables. Use the following sub-steps to complete electrical connections.

- Invert the backrest to reveal the lighting strip.
- Orient the backrest so that the power connector is near the lighting cable coming from the wall.
- Connect the lighting cable to the corresponding connector on the lighting strip.
- Rotate the backrest so the front is facing forward.

136. Cut two (2) pieces of wood to 8-3/8" length. Use these as gage blocks for setting the height of the backrest(s).

137. Place the two (2) gage blocks on the upper bench.

138. Rest the backrest on top of the gage blocks and check for level. (Top of Backrest to top of bench is 20").

139. Fasten the back rest to the wall using the screws provided in the pre-drilled holes.

140. Install wood plugs into the screw holes.

141. Carefully remove the gage blocks.

142. Neaten the lighting cables and tuck the excess cable back into the cable chase.

143. For a return bench backrest, attach the lighting strip to the back wall backrest lighting strip using a jumper.

144. Repeat Step 137 through Step 141 for the return bench backrest.



Back Wall Backrest

Return Bench Backrest



Figure 44. Installing the Backrest(s)

MOUNTING THE HEATER

If this sauna room includes a wall-mounted electrical heater, or a floor-standing electrical heater, please refer the associated heater ***Installation and Operating Instructions*** manual.

Before installing rocks, complete electrical connections and test the heater. Electrical installation must be made by a licensed electrician in accordance with the National Electric Code and local regulations.

INSTALLING A WOOD-BURNING HEATER

If this sauna room includes a wood-burning heater, please refer to the associated heater ***Installation and Operating Instructions*** manual.

To ensure safe installation and operation of a wood-burning sauna heater it is recommended to contract with an installer that specializes in installation of wood-burning devices and is licensed and bonded.

PLACING SAUNA ROCKS

The rocks supplied with the heater were selected with the best traditional sauna performance in mind.



HEAVY OBJECT: A full container of rocks is heavy. To avoid injury, bend at the knees when picking up the box.

- Use of other rock types may void heater warranty.
- **NEVER** operate heater without rocks in place!
- **RINSE** rocks with water before placing in the heater.

CAREFULLY place rocks loosely around the heater elements to allow efficient air circulation.

For complete details, please READ the *PLACING SAUNA ROCKS* section of the appropriate heater ***Installation and Operating Instructions*** manual.

Save the extra rocks as replacements.

INSTALLING the HEATER GUARD

Before installing a heater guard, please READ the *INSTALLATION REQUIREMENTS* and *INSTALLATION PLANNING* sections of the appropriate heater ***Installation and Operating Instructions*** manual.

Ensure all safety considerations are met before constructing and installing a heater guard.

If a pre-made heater guard is provided with the heater, **DO NOT** alter or modify the heater guard.

SECTION 6. INSTALLING METAL FASCIA and ROOFING

Use the following instructions for preparing and installing metal fascia and roofing onto the outdoor sauna room.

NOTE: Spare screws are included with the hardware.

RECOMMENDED TOOLS

- Step Ladder
- Tape Measure, Straight Edge/Square
- 1/8" metal-cutting drill bit.
- Drill, 1/4" Hex Head Magnetic Socket, and T10 Torx Head Drive Bit
- Tin Snips
- Pencil, String/Chalk Line
- Stapler and Roofing Staples

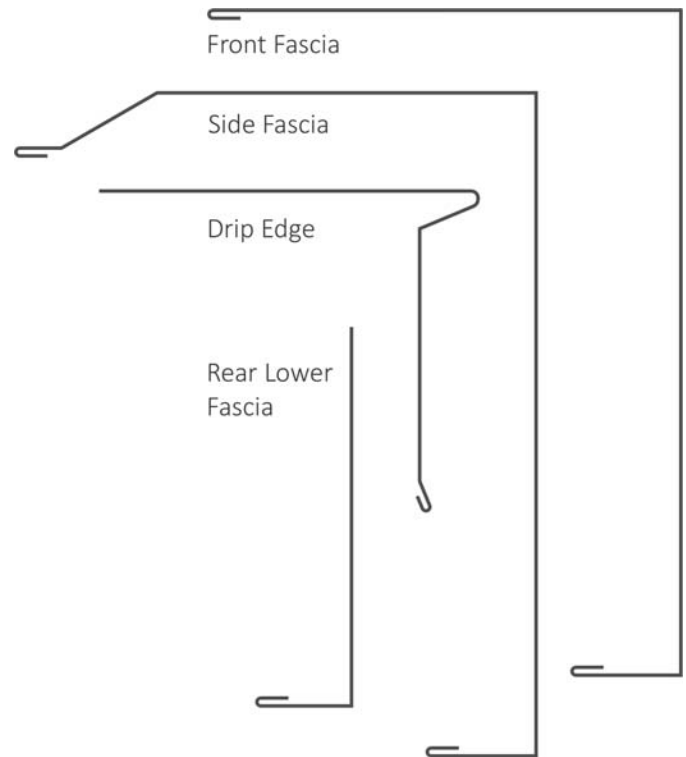


Figure 45. Metal Fascia Profiles

APPLYING WEATHER BARRIER

1. Using a stapler and roofing staples, apply weather barrier onto the wood decking, overlapping the ends onto the front, sides, and back edge fascia.

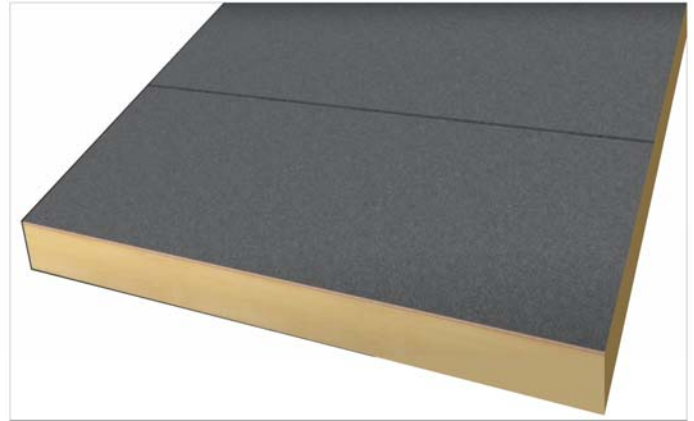


Figure 46. Applying Weather Barrier

APPLYING DRIP EDGE and LOWER REAR FASCIA

2. Pre-fit the drip edge flashing **over** the weather barrier and back edge of the wood decking.
3. Using a tin snip, cut and shape/bend the ends of the drip edge flashing to overlap the corners of the wood fascia.
4. From the top surface of the drip edge, use #8 x 1-1/4" T10 pan head screws (or 1-1/4" galvanized nails), spaced accordingly, to attach the flashing to the wood decking.
 - Ensure correct compression of the neoprene washer on each screw. (With the edge of neoprene appearing slightly compressed from the edge of the steel washer).
5. Pre-fit the lower rear fascia beneath the drip edge flashing.
6. Using a tin snip, cut and shape/bend the ends of the lower rear fascia to overlap the corners of wood fascia and to fit beneath the edges of the drip edge flashing.
7. Slide the top edge of the lower rear fascia up under the drip edge flashing and press up to overlap the bottom edge of the wood fascia.
8. Using three (3) #8 x 1-1/4" T10 pan head screws, spaced evenly, attach the bottom overlapped edge of the lower rear fascia to the bottom edge of the wood fascia.

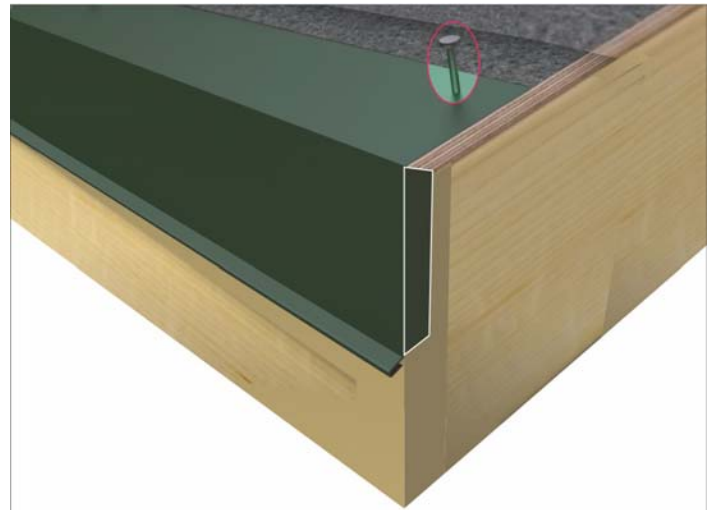


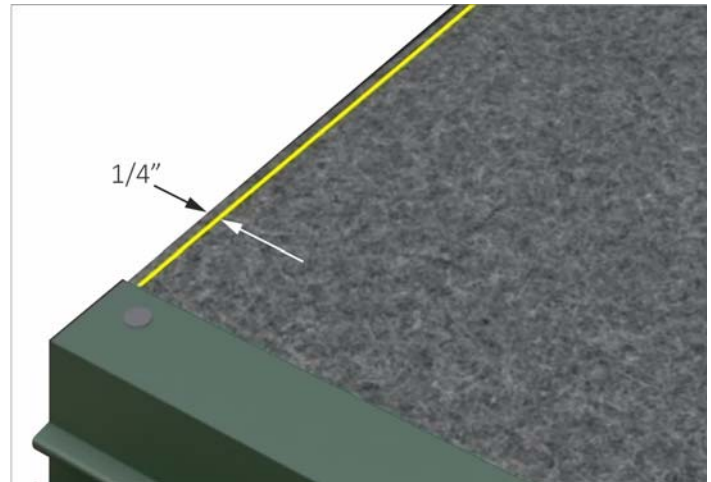
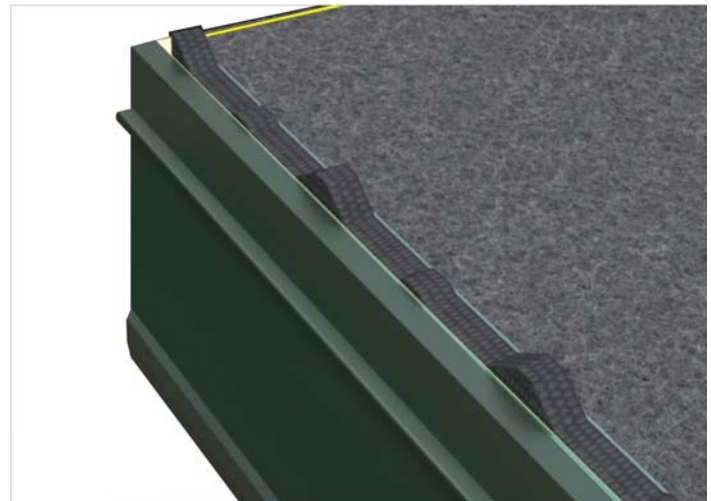
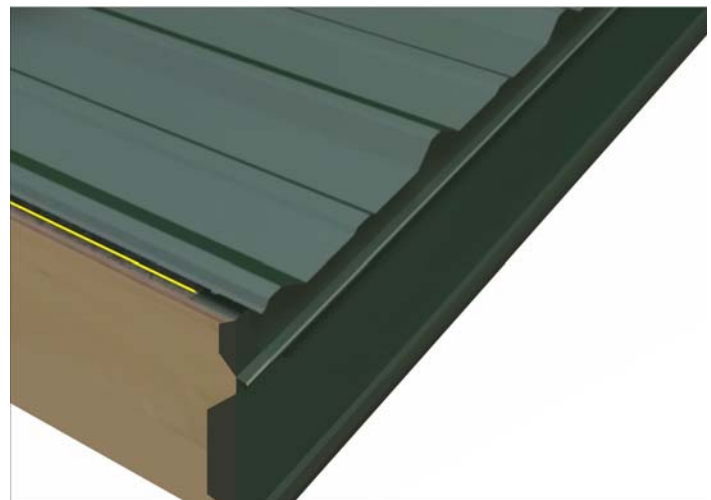
Figure 47. Applying Drip Edge



Figure 48. Applying Lower Rear Fascia

APPLYING SHEET METAL ROOFING

9. For the geographic location of where this sauna is installed, lay the metal roof sheets in the direction **TOWARDS** the prevailing winds.
 - Meaning, begin from the opposite end of the roof, moving towards the direction the wind predominately blows **from** most of the year.
 - Orient the “trailing (overlap) edge” of the sheet metal in the direction furthest away from the wind.
10. Plan for laying the sheet metal such that the trailing (overlap) edge of each successive panel will overlap the leading edge (purlin bearer leg) of each previous panel.
11. Using a straight edge/square, draw a reference chalk line 1/4" from the edge of the wood deck along the starting (gable) edge of the roof.
12. Remove the paper backing from the self-adhesive tape and apply a strip of polyethylene closure onto the top edge of the drip edge fascia.
13. When laying the first sheet, align the side edge with the reference chalk line.
 - The bottom (back) edge of the roofing sheet should overhang past the back drip edge flashing by 1-inch.
 - The front (top) edge of the roofing sheet will be covered later by the front fascia.

**Figure 49. Drawing a Chalk Line****Figure 50. Applying Polyethylene Closure****Figure 51. Aligning Edge with Chalk Line**

14. Using 2-inch #10 gasketed hex drivescrews, spaced accordingly, attach the metal sheet from the valley (not the crown) onto the wood decking.

- **TIP:** Using an 1/8" metal drill bit, pre-drill the holes into the steel only.
- Ensure correct compression of the neoprene washer on each screw. (With the edge of neoprene appearing slightly compressed from the edge of the steel washer).

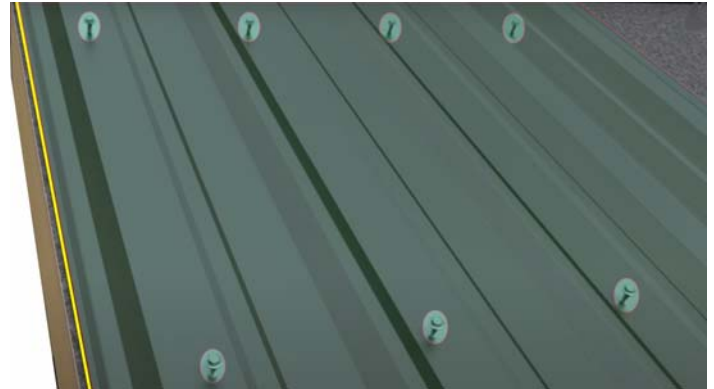


Figure 52. Attaching the Metal Roofing

15. Carefully align the bottom edge of the next metal sheet with the bottom edge of the previously attached metal sheet.

16. For the next metal sheet, lay the crown (overlap) edge onto the leading edge (purlin bearer leg) of the previously attached metal sheet.

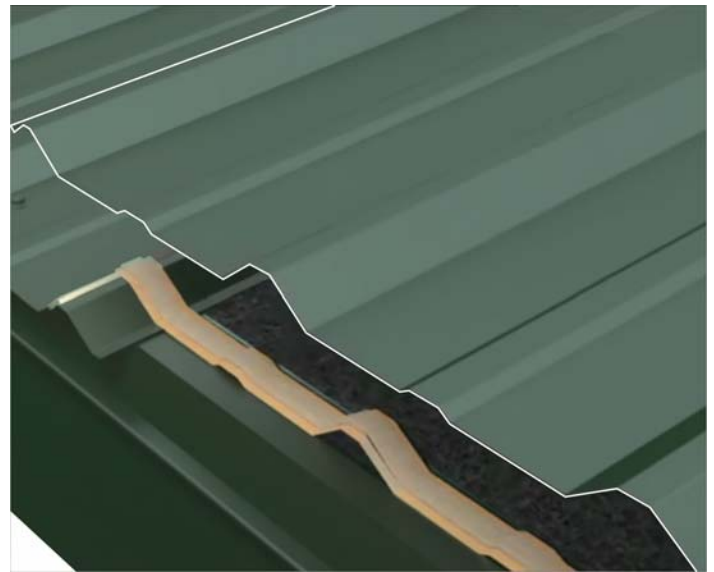


Figure 53. Aligning and Laying Second Sheet

17. Using 2-inch #10 gasketed hex drive screws, spaced accordingly along the overlapping crown, attach the new sheet to the previous sheet.

- Ensure correct compression of the neoprene washer on each screw. (With the edge of neoprene appearing slightly compressed from the edge of the steel washer).



Figure 54. Attaching Overlapped Crown

18. Repeat Step 14 through Step 17 for each successive roofing panel.



Figure 55. Attaching Roof Panel to Wood Decking

INSTALLING SIDE FASCIA

19. Pre-fit the metal side fascia over each side of the roof.

NOTE: The three (3) steps below are optional. The bottom (back) end of the side fascia can be folded and boxed as shown, or skip these three (3) steps and leave the sheet metal alone with the standard factory edge.

20. Cut (illustrated as red lines) and remove the waste pieces (illustrated in white coloration).
21. Fold the ends of the side Fascia (Illustrated as white lines) to cover the top and bottom ends of the metal roof sheets.

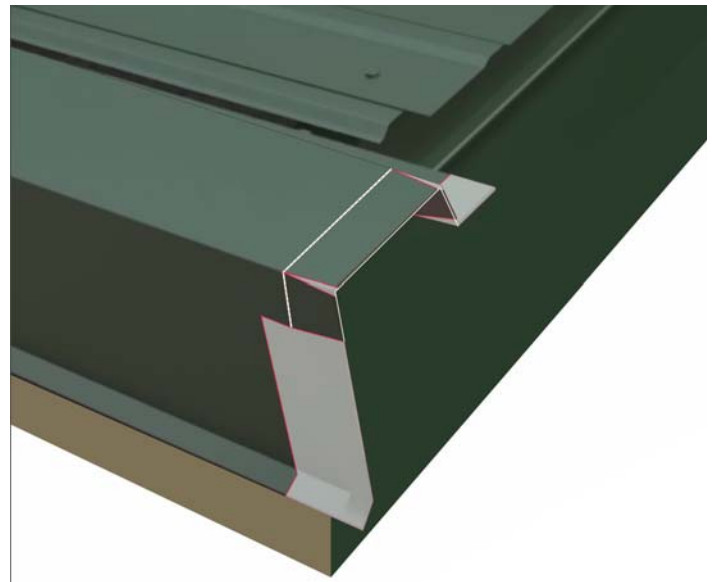


Figure 56. Cuts, Waste Pieces, and Folds Marked

22. Secure the fold with a rivet that will overlap the roof crown.



Figure 57. Ends Folded and Riveted

23. With the side fascia right-side up, carefully align and apply the side fascia down over the roof edge crown while simultaneously pressing the side of the metal fascia against the wood fascia.
24. Using 2-inch #10 gasketed hex drive screws, spaced accordingly, attach the lapped edge at the top of the side fascia down onto the metal roof sheet.
 - Ensure correct compression of the neoprene washer on each screw. (With the edge of neoprene appearing slightly compressed from the edge of the steel washer).
25. Using #8 x 1-1/4" T10 pan head screws, spaced accordingly, attach the overhanging portion of the metal side fascia to the wood fascia.



Figure 58. Attaching the Side Fascia

INSTALLING FRONT EDGE CAP

26. Remove the paper backing from the self-adhesive and apply a strip of polyethylene closure approximately 2" from the front edge.

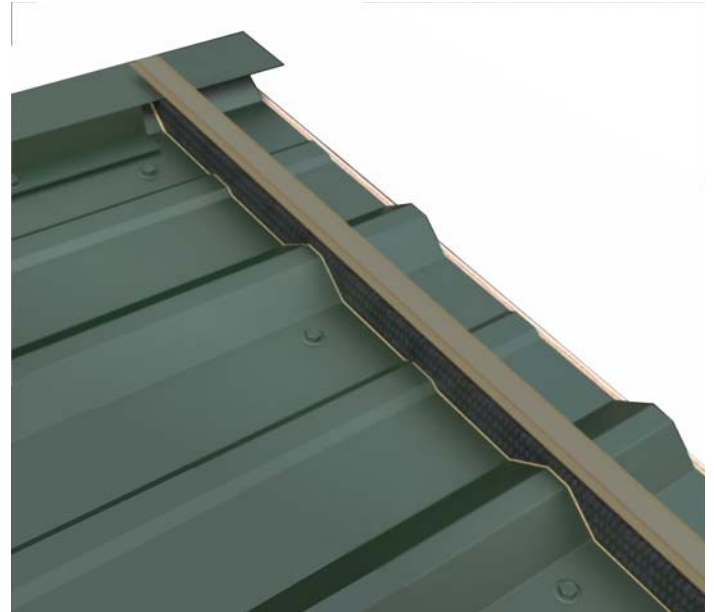


Figure 59. Applying Polyethylene Closure and Tape

27. Measure across the front fascia.
28. Mark the length to cut the front edge cap using a square.
29. Cut the front edge cap to length using a tin snip.
30. Apply the front edge cap down over the front edge of the roof while simultaneously pressing the front edge cap against the front wood fascia.
31. Attach the front edge cap to the crowns of the roofing metal using 2-inch #10 gasketed hex drive screws.
32. Cut off a 1" wide triangle relief from both ends of the front edge cap. See inset image in Figure 60.
33. Attach the under side of the front edge cap to the front wood fascia using #8 x 1-1/4" T10 pan head screws, spaced accordingly.
34. Orient one of the plastic corner caps with two (2) holes on the bottom and one (1) hole on the top.
35. Press-fit the plastic corner cap over one of the front corners of the roof.
36. Visually align the corner cap for best appearance.
37. Using the bottom of the corner cap as a template, make two (2) pilot holes in the metal fascia with a 1/8" drill bit.
38. Attach the bottom edge of the corner cap to the bottom edge of the roof corner using a T10 star drive and two (2) trim head screws- do not over tighten.
39. Visually align the corner cap to ensure it is straight and true with the roof.
40. Using the top of the corner cap as a template, make one (1) pilot hole in the metal fascia with the 1/8" drill bit.
41. Attach the top edge of the corner cap to the top roof corner using a 1/4" socket head drive and one (1) gasketed roofing screw.
42. Repeat Step 34 through Step 41 to attach the other corner cap.

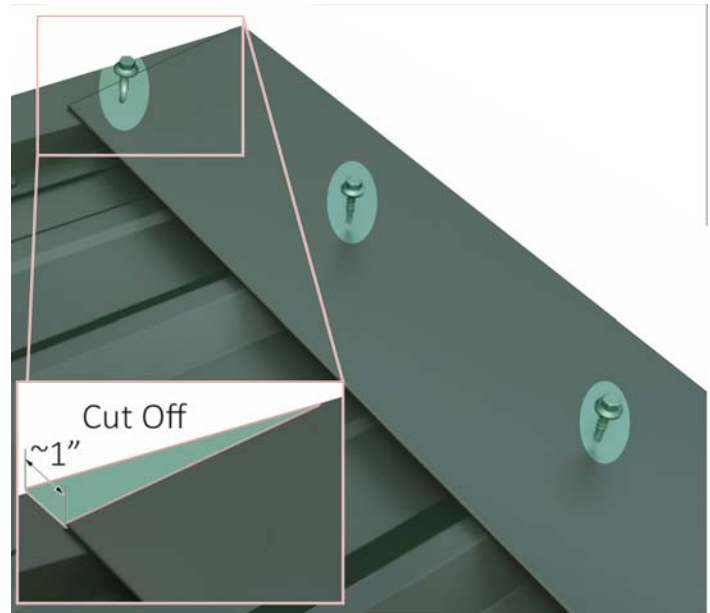


Figure 60. Attaching Front Edge Cap & Cutting Reliefs

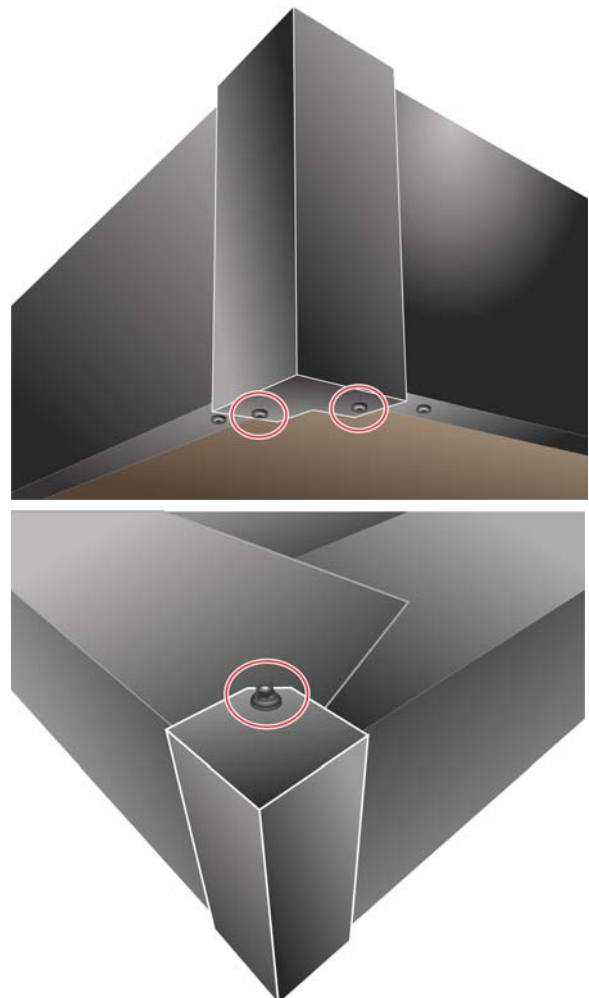


Figure 61. Attaching the Corner Caps

SECTION 7. INSTALLING SAFETY PLACARDS

Three (3) metal safety placards are included inside the installation instruction envelope packaged with the sauna system.



Figure 62. Caution Placard

1. Position the CAUTION placard in plain sight on the interior wall directly above the sauna heater and attach with the two (2) screws provided.

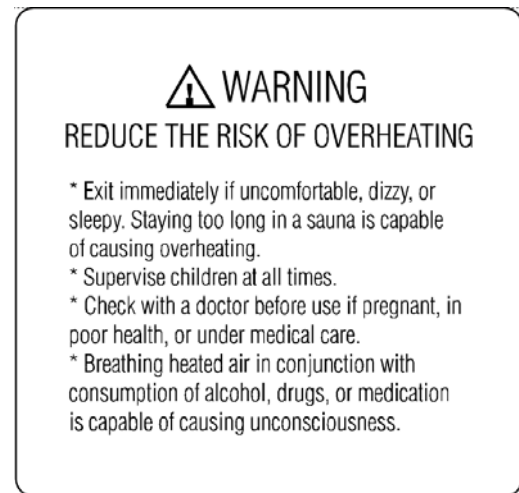


Figure 63. Warning Placard

2. Position the two (2) WARNING placards in plain sight on both sides of the doorway to the sauna.
3. Attach the placards using the eight (8) Screws provided, four (4) screws each.

SECTION 8. MANAGING TWISTED CORNER TRIM

IMPORTANT: The exterior of the Euro outdoor sauna requires prime/paint or stain within a few days of installation, and before exposure to rain/snow. **DO NOT** paint or stain the interior.

Twisting occurs naturally for some species of open-cell wood. Variations in grain density, changes in humidity, moisture on/in the wood, and changes in the weather all contribute to the effect. Twisting is particularly troublesome with installing wood trim/corner caps.

- If the corner trim is twisted from one end, begin nailing from the opposite end while a second person holds the trim/corner cap firmly to the wall.

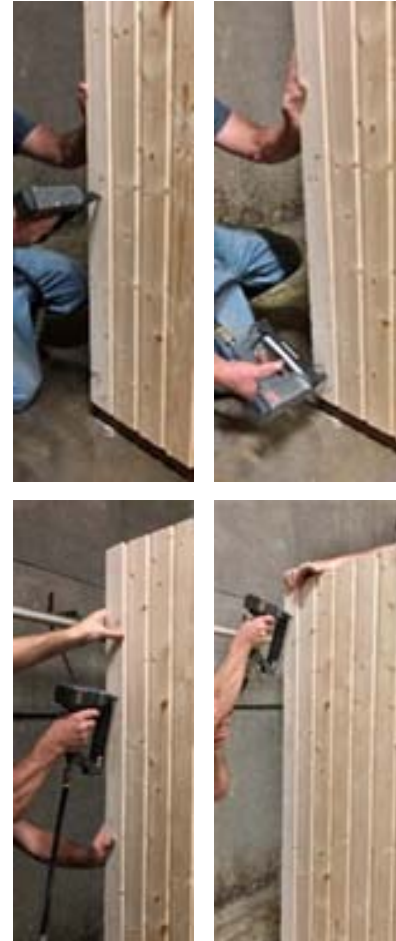


Figure 64. Managing Twisted Corner Trim

MENDING BLEMISHES

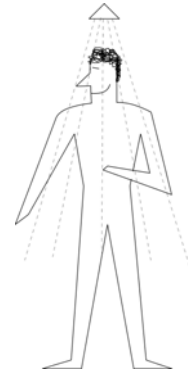
Using a putty knife or a wood shim, apply exterior wood filler over nail holes and other minor blemishes and allow to dry. Using a block of wood and 220 grit sandpaper, sand smooth the areas where the wood filler was applied.



Figure 65. Mending Blemishes

SECTION 9. HOW TO TAKE A SAUNA

- Devote adequate time to completely relax while taking a sauna bath.
- Remove clothing and jewelry. Apply a towel loosely about the body.
 - To enjoy the soothing effect of steam, splash a small amount of water onto the heated sauna rock.
 - Use one dipper full (approximately 1/2 cup) of clean water at a time, keeping exposed skin clear of the steam as it rises off the rocks.
 - **DO NOT** use chlorinated pool or spa water, as corrosion damage may result.
 - **DO NOT** smoke, exercise or drink alcoholic beverages while in the sauna room.
- After ten (10) minutes or when perspiration begins, exit from the sauna, relax in the dressing area, followed by a cool shower.
- Stay hydrated, drinking water is best.
- The allotted cool down time should equal the amount of time occupying the sauna.
- Step back into the sauna room and remain for five (5) or ten (10) minutes.
- Repeat the cycle two (2) or three (3) more times. End with a brisk shower, rinsing in cool water.
- Put on clothing only when perspiration has stopped and the body is completely dry.



Shower



Sauna Bathe



Shower



Rest/Relax



Hydrate

©2025 Sauna360 Inc.

Finnleo/SAUNA360 reserves the right to change specifications or design without notification and without incurring any obligation.

The Bluetooth® word mark and logos are registered trademarks owned by Bluetooth SIG, Inc. and any use of such marks by Sauna360 is under license.

Apple® is a registered trademark of Apple Inc.

Finnleo® is a registered trademark of Sauna360.

